

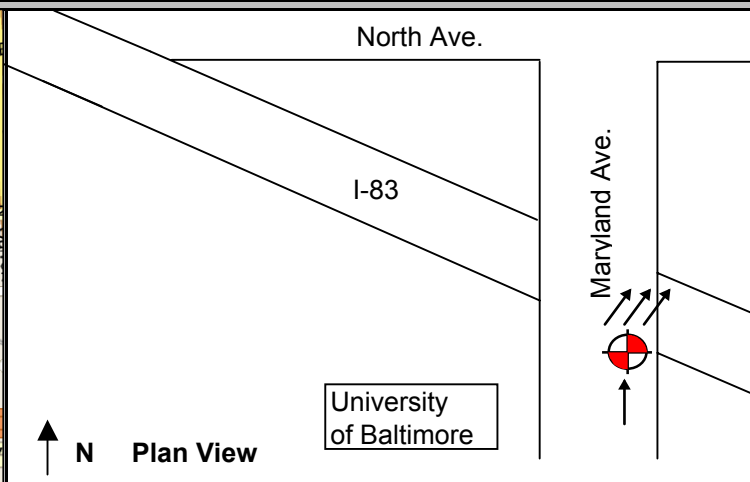
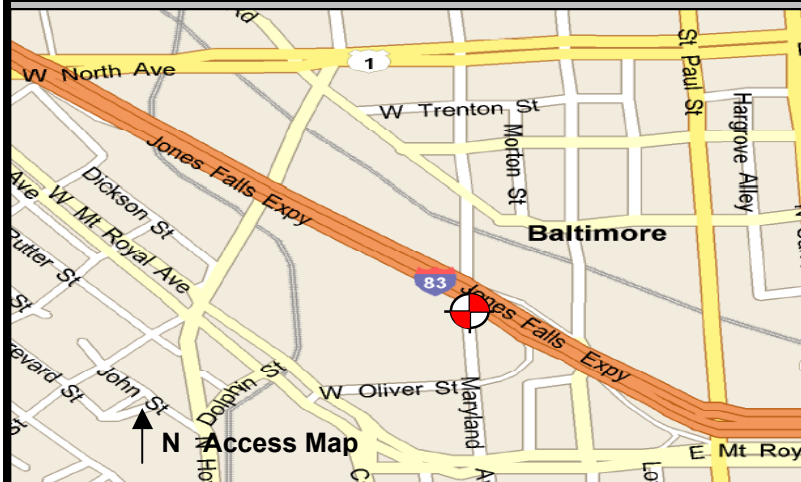
# Baltimore SSO

## Site Investigation Report

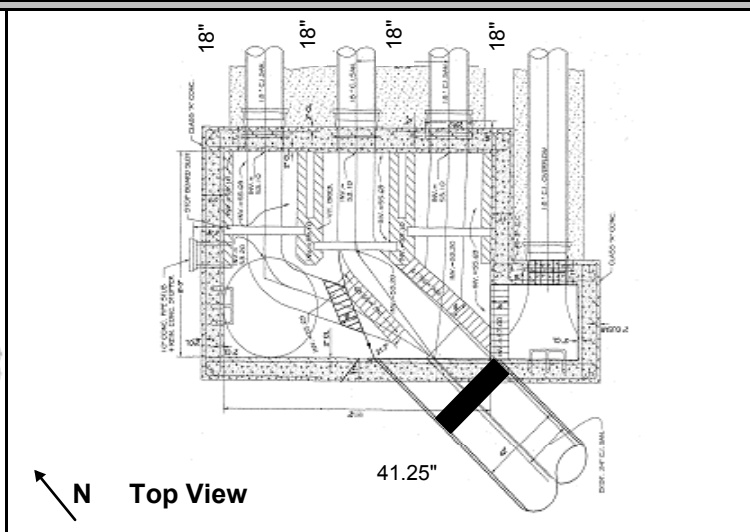
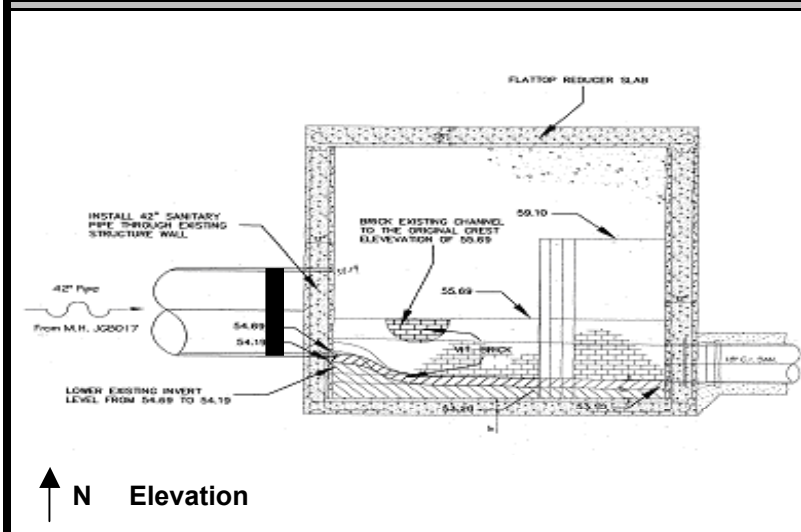
FM Initials: DE

Project: 06 Maryland Avenue Interceptor

Site Name:	06_125S	Monitor Series:	4000 WR	Monitor S/N:		Manhole #:		<b>Investigation Information:</b> Upstream Input: (L/S, P/S) DNI Upstream Manhole: Downstream Manhole: Depth of Flow: 15" + - 0.25" Description of Site Hydraulics:
Address / Location:	Maryland Ave (North of Oliver St.)	Map Page #:	ADC #35	Map Grid #:	B-10	Pipe Height:	41.25"	
Access:	Drive	IP Address:	CDPD	GPS Coords:	N DD.dddd	W DD.dddd		
Date/Time of Investigation:	6/29/2005 10:30							



SLOW, SMOOTH FLOW
<b>Manhole Information:</b>
Manhole Depth: 20.8'
Manhole Material / Condition: BRICK - FAIR (COATED)
Active Drop Connections? No
System Character:
Residential
X Commercial
X Industrial



<b>Notes:</b>
Siphon Chamber; three 18-in siphon barrels. Weir wall separates 18-in. overflow pipe.
<b>Legend:</b>
Cast Iron Flap Valve
Sensor Location
N.T.S.- Not to scale

Post -construction flow monitoring completed May 31, 2007.  
(flow monitoring continues under Paragraph 9, site JF07)